



FOR REFERENCE SEE MAP ENTITLED:

PLAN OF SUBDIVISION "DEERCLIFF" LAND OWNED BY AND DEVELOPED BY GORDON FAMILY LTD. PARTNERSHIP AVON MOUNTAIN ROAD (U.S. ROUTE 44) & DEERCLIFF ROAD AVON, CONNECTICUT SCALE 1"=40' JUNE 1999 HODGE SURVEYING ASSOCIATES, P.C. SHEET 2, 3 OF 4.

NOTES:

1) PROPERTY LOCATED IN RU-2A ZONE.

PARCEL #509-0012

TOWN OF AVON
OPEN SPACE

PARCEL #209-0045

PARCEL #509-0006
148,257 sq.ft.
3.40 acres

PARCEL #209-0049

NOTE:

HOUSE LOCATED AS SHOWN ON APRIL 9, 2008. LOCATION DOES NOT VIOLATE THE ZONING ORDINANCE OF THE TOWN OF AVON.

_____, SURVEYOR
HODGE SURVEYING ASSOCIATES, P.C.

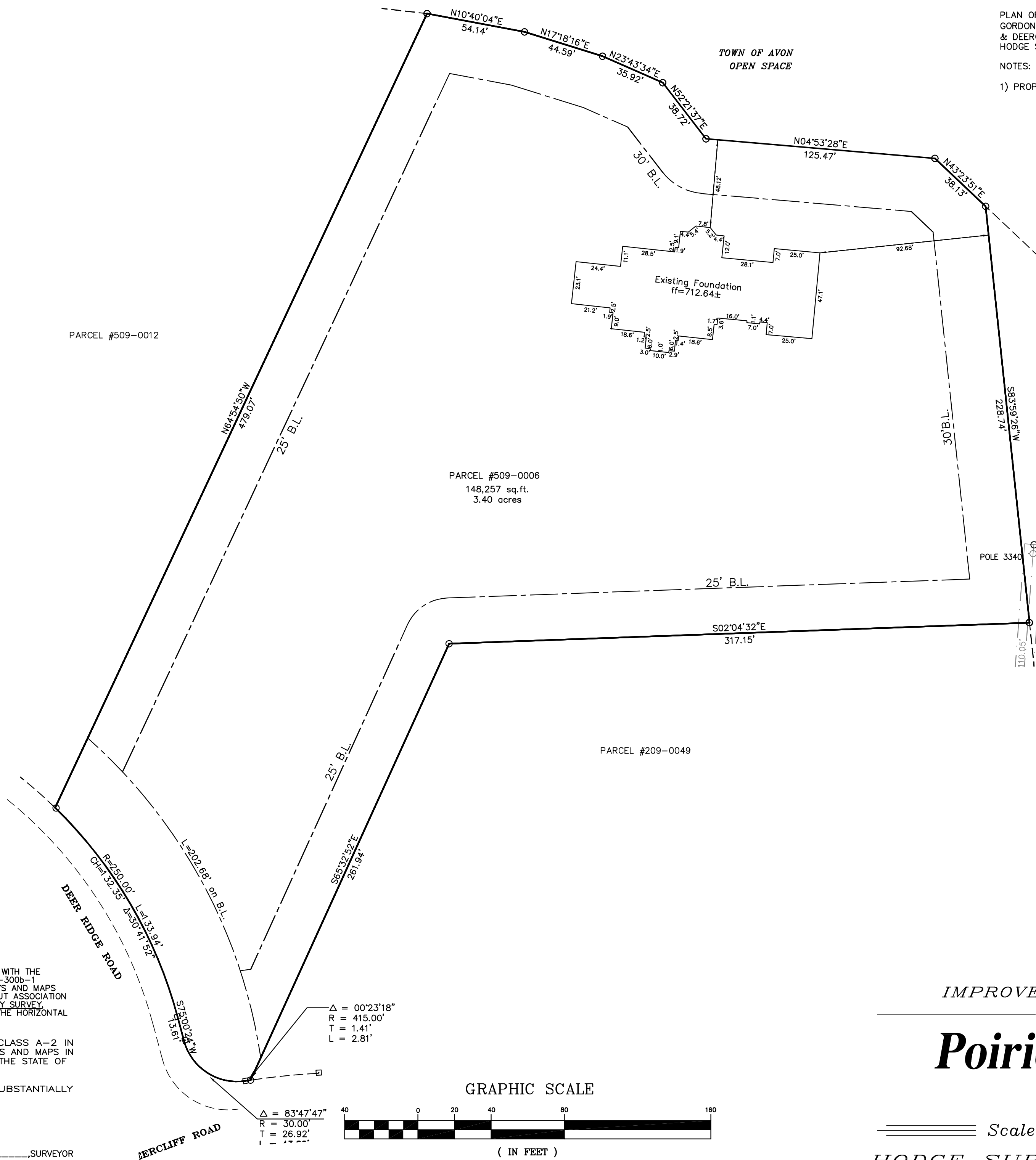
NOTES AND DECLARATIONS
THIS SURVEY AND MAP HAS BEEN PREPARED IN ACCORDANCE WITH THE REGULATIONS OF CONNECTICUT STATE AGENCIES, SECTIONS 20-300b-1 THROUGH 20-300b-20, THE MINIMUM STANDARDS FOR SURVEYS AND MAPS IN THE STATE OF CONNECTICUT ENDORSED BY THE CONNECTICUT ASSOCIATION OF LAND SURVEYORS, INC. THE TYPE OF SURVEY IS PROPERTY SURVEY. THE BOUNDARY DETERMINATION CATEGORY IS RESURVEY AND THE HORIZONTAL ACCURACY CONFORMS TO A-2.

THIS IMPROVEMENT LOCATION MAP CONFORMS TO CLASS A-2 IN ACCORDANCE WITH THE MINIMUM STANDARDS FOR SURVEYS AND MAPS IN THE STATE OF CONNECTICUT AS ADOPTED FOR USE BY THE STATE OF CONNECTICUT ON SEPTEMBER 26, 1996.

TO MY KNOWLEDGE AND BELIEF THIS MAP IS SUBSTANTIALLY CORRECT AS NOTED HEREON.

_____, SURVEYOR
FRANCIS A. RICHARD, L.S. #11351

S:\Land Projects\1997-50.dwg\1016.dwg 4/14/2008 11:40:46 AM EDT



$\Delta = 00^{\circ}23'18''$
R = 415.00'
T = 1.41'
L = 2.81'

$\Delta = 83^{\circ}47'47''$
R = 30.00'
T = 26.92'
L = 2.81'

GRAPHIC SCALE



(IN FEET)
1 inch = 40 ft.

IMPROVEMENT LOCATION SURVEY
OF LAND OWNED BY

Poirier Homes, LLC

6 Deer Ridge Road
Avon, Connecticut

Scale: 1" = 40' Date: April 2008

HODGE SURVEYING ASSOCIATES, P.C.